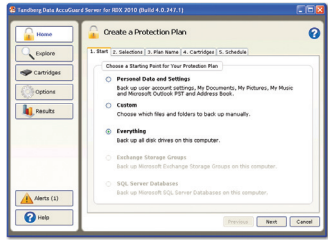


5 Create a Data Protection Plan



From the Home screen, select “Add a Protection Plan” located in the upper-right section of the screen.

The Create a Protection Plan interface appears.

Complete the tasks in order, beginning with the Start tab and ending with the Schedule tab.

Refer to the following table for a description of tab tasks.

Protection Plan Tab Tasks

Tab	What to Do
Start	<p>Select one of the following protection plan options:</p> <ul style="list-style-type: none"> Personal Data and Settings — backs up data that is located in the Documents and Settings folder, such as email account and desktop settings. Custom — backs up the files and folders that you manually select. Everything — backs up all disk drives on the host computer (recommended). Exchange Storage Groups — backs up Microsoft Exchange Storage Groups on the host computer. (This option only applies if MS Exchange is installed on the host.) SQL Server Databases — backs up SQL Server databases on the host computer. (This option only applies if SQL Server is installed on the host.)
Selections	<p>The Selections tab function varies depending on which plan option you initially selected.</p> <ul style="list-style-type: none"> Personal Data and Settings— select the user account settings to include in your protection plan. Custom — select the drives, directories, and files to include in your protection plan. Everything — the software automatically selects all disk drives on the computer for backup. Exchange Storage Groups — select one or more storage groups to include in your protection plan. SQL Server Databases — select one or more databases to include in your protection plan.
Plan Name	Type a name and description for the backup plan.
Cartridges	Select one or more storage locations for the protection plan. If necessary, click Add to include a storage location. You can add storage located on a local, network, or removable disk drive.
Schedule	Choose a time and frequency for your protection plan. (The Advanced option allows you to schedule a backup run time under certain circumstances, such as when the system is idle.)

For More Information

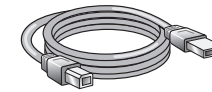
Visit the Support section of the Tandberg Data web site (<http://www.tandbergdata.com>) for more information, including product warranty and registration, knowledge base articles, user documentation, and technical support.

TANDBERG DATA
rdx® QUIKSTOR
 with **AccuGuard™**

Quick Start Guide

External USB

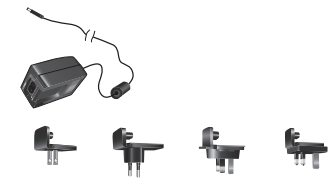
Check Accessory Kit Contents



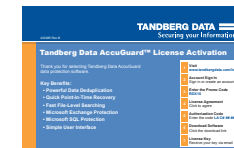
USB Data Cable



Warranty Card



Power Supply with Four Power Sockets

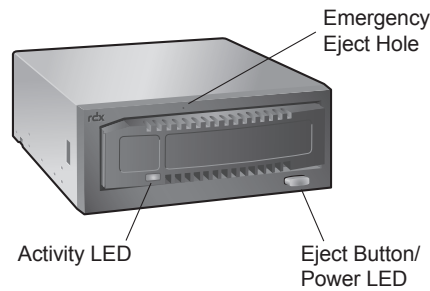


AccuGuard License Activation Card

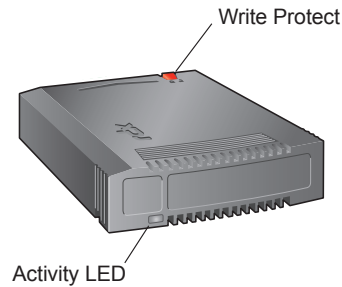


RDX Utility CD

RDX System Features



RDX Cartridge Features



Eject Button/Power LED

The following table describes the Power LED's function:

LED Status	Meaning	Description
Off	No Power	Unit does not have power.
On Green	Ready	Power is On and the unit is working properly.
Blinking Green	Ejecting	Unit is rejecting the cartridge.
On Amber	Fault	Unit has detected a fault condition. For more information, run a diagnostic application.
Blinking Amber	Prevent	Host computer is accessing the media and the user has pressed the Eject Button. The unit will eject the cartridge after the Host access completes.

Activity LED

The following table describes the Activity LED's function:

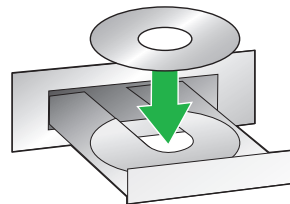
LED Status	Meaning	Description
On Green	Ready	Cartridge is ready.
Blinking Green	Activity	Reading, writing, seeking.
On Amber	Fault	Unit has detected a cartridge fault condition. For more information, run a diagnostic application.

Software System Requirements

For AccuGuard Server for RDX software:

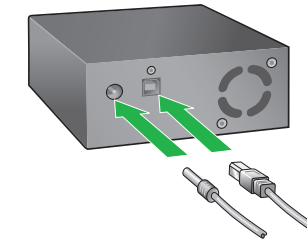
Operating System	Windows Server 2003 (32-bit, 64-bit), Windows 2008 (32-bit, 64-bit), Windows 2008 R2, Windows XP, Vista, and Windows 7
Processor	Minimum 2.0 GHz CPU
Memory	Minimum 2 GB RAM
Free Disk Space	80 MB

1 Install RDX Utility



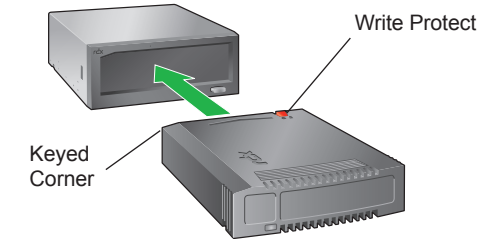
Note: The RDX Utility installs only on Windows operating systems.

2 Connect USB and Power Cables



- Connect the USB cable to the RDX drive and to the host computer.
- Attach the power socket that is appropriate for your region to the power adapter.
- Connect the power cable to the drive, and plug it into a power outlet.

3 Load RDX Cartridge



4 Install AccuGuard Server for RDX

Note: AccuGuard installs only on Windows operating systems.

- Follow the steps on your AccuGuard License Activation card to download the software.
- Run the AccuGuard Server for RDX.exe file.
- At the final screen of the setup wizard, be sure the checkbox "Run AccuGuard Server for RDX now" is selected. Click Finish.
- Select "Add a License Key." Enter the license key that you received via email in the above download process.
- Click Yes to activate the software license, then click OK. The AccuGuard Home screen opens.

