

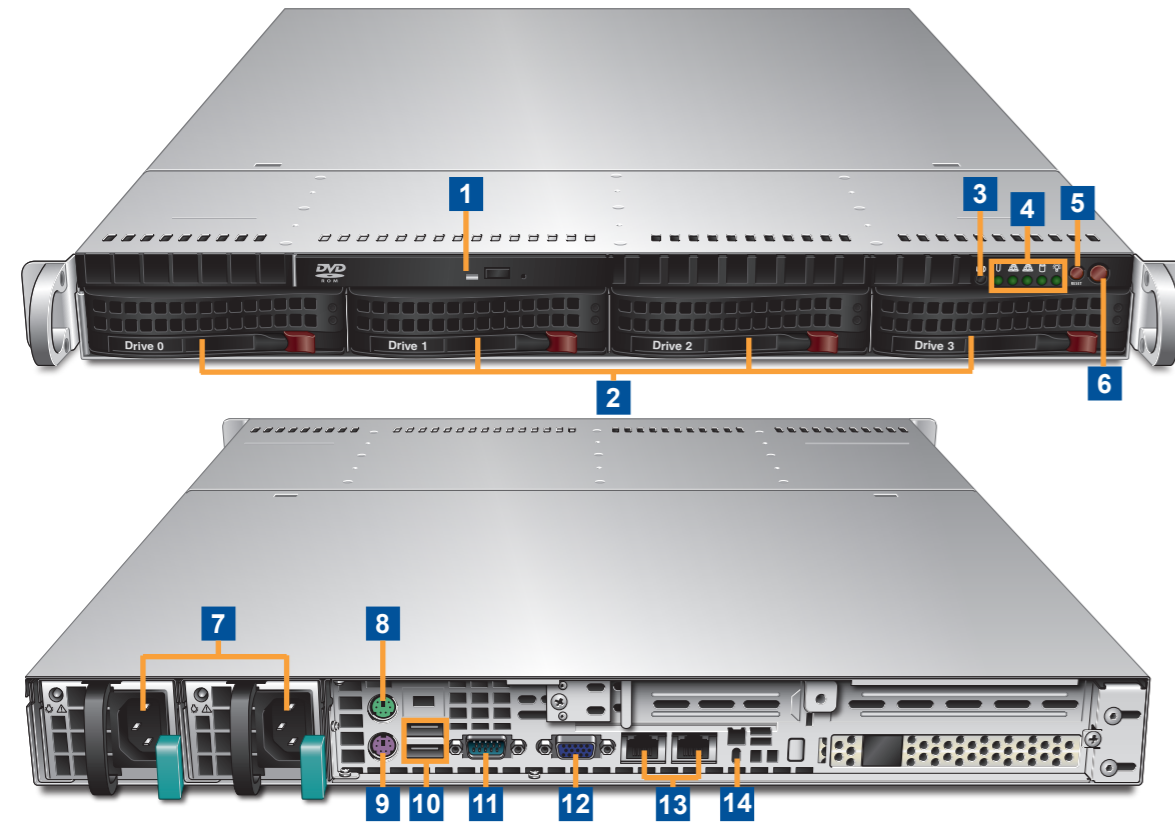
WHAT'S IN THE BOX?



1. AccuVault 1U-4TB or 1U-8TB
2. U.S. Region Power Cord (2 each)
3. U.K. Region Power Cord (2 each)
4. Ethernet Cable (2 each)
5. Rackmount Inner Rails (2 each)
6. Rackmount Outer Rails (2 sets)
7. Mounting Ears (3 sets)
8. Cage Nuts and Bolts (4 each)
9. Screw Pack
10. License Activation Card
11. Appliance Bezel
12. Bezel Lock Keys
13. Quick Start Guide
14. Rackmount Instructions

AccuVault 1U System Features

Note: The front and back panel features are identical for the 4TB and 8TB unit.



- | | |
|---|-----------------------------------|
| 1 DVD Drive | 8 Mouse connector (green) |
| 2 1 TB or 2 TB drives depending on model | 9 Keyboard connector (purple) |
| 3 Unit Identifier (UID) button | 10 USB 2.0 port (2 each) |
| 4 LED indicators for UID/temperature, network ports, hard drives, and power | 11 Serial Connector |
| 5 Reset button | 12 VGA connector |
| 6 Power button | 13 Gigabit Ethernet port (2 each) |
| 7 Power connector (2 each) | 14 Unit Identifier (UID) button |

TECHNICAL SUPPORT

Visit the Support section of the Tandberg Data web site (<http://www.tandbergdata.com>) for the following:

- Driver, firmware, and software updates
- Knowledge base articles
- Troubleshooting information
- Product documentation
- Product warranty and registration
- Email and phone technical support

Make a note of your Product Model number and Product Serial number here

Model No. Serial No.

Power Ratings

AC Input Voltage and Rated Input Current	100-127 VAC 1,6A and 200-240 VAC 1,0A
Rated Input Frequency	50/60 Hz

Safety Precautions



Be aware of the locations of the power on/off switch on the AccuVault chassis as well as the room's emergency power-off switch, disconnection switch, or electrical outlet. If an electrical accident occurs, you can then quickly remove power from the system.

Keep the area around the AccuVault clean and free of clutter.

Remove any jewelry or metal objects from your body, which are excellent metal conductors that can create short circuits and harm you if they come into contact with printed circuit boards or areas where power is present.

Electrostatic discharge is generated by two objects with different electrical charges coming into contact with each other. An electrical discharge is created to neutralize this difference, which can damage electrical components and printed circuit boards. The following measures are generally sufficient to neutralize this difference *before* contact is made to protect your equipment from ESD:

- Use a grounded wrist strap designed to prevent static discharge.
- Keep all components and printed circuit boards (PCBs) in their antistatic bags until ready for use.
- Touch a grounded metal object before removing any board from its antistatic bag.

The power supply cord must include a grounded plug and must be plugged into a grounded electrical outlet.

The AccuVault weighs 43 pounds (19.5 kg). Two people are needed to move or lift it.

Related Documentation

For additional information about the AccuVault 1U-4TB or 1U-8TB, refer to the following publications available from the Support section of the Tandberg Data web site (<http://www.tandbergdata.com>):

- *AccuVault 1U-4TB/1U-8TB User Manual, Part Number 1019662*
- *Field Instruction: Installing the AccuVault in a Rack, Part Number 1019660*

©2010 Tandberg Data. All rights reserved. AccuVault and AccuGuard are trademarks of Tandberg Data. RDX is a registered trademark of ProStor Systems, Inc. All other trademarks are the property of their respective owners.

P/N 1019252 Rev. A

August 2010



TANBERG DATA
Securing your Information

Tandberg Data GmbH
Feldstrasse 81
44141 Dortmund, Germany

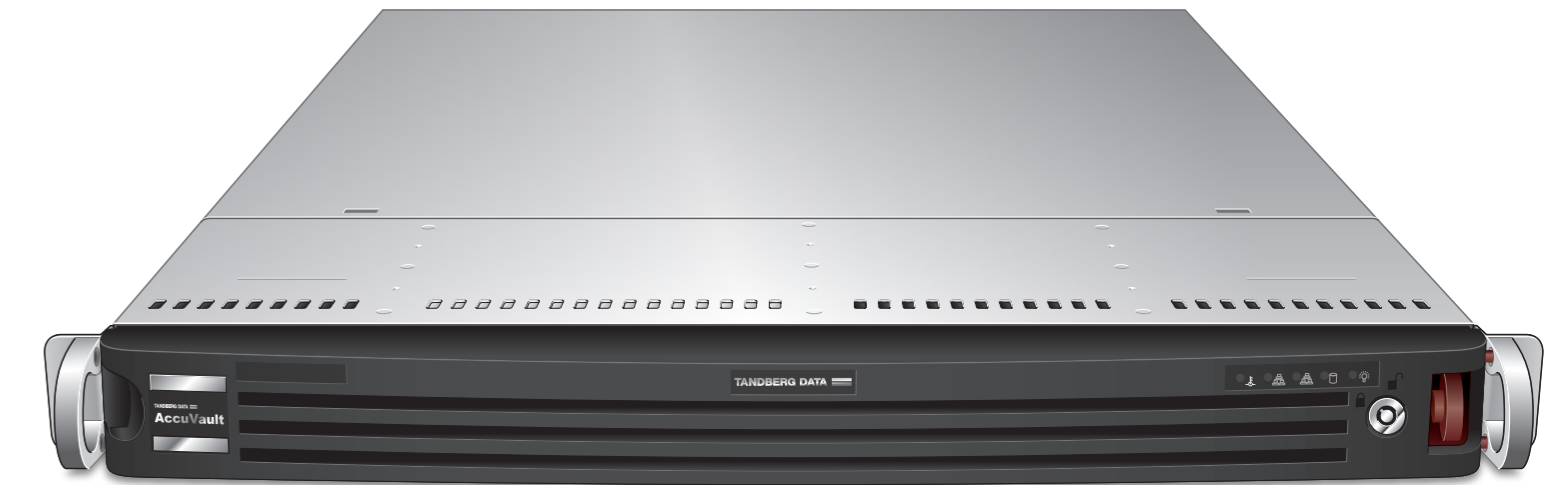
Agency Model Number: RMN-A-04-10
AccuVault 1U-4TB Model Number: DPS3120
AccuVault 1U-8TB Model Number: DPS3140

www.tandbergdata.com

TANBERG DATA
Securing your Information

AccuVault™ 1U-4TB or 1U-8TB
with AccuGuard™

QUICK
START



Before you Begin

Complete the following steps before you setup the AccuVault 1U-4TB or 1U-8TB:

- Verify all items are included in the accessory kit. (See *What's in the Box?* section.)
- Keep the packing materials and box in case you need to ship the unit later.
- Locate an appropriate area for the AccuVault that has clearance for adequate ventilation, minimal dust, and an appropriate power source.
- Follow the rackmount instructions provided in the accessory kit to install the unit in a rack.
- Connect a monitor, mouse, and keyboard to the AccuVault unit. This step is needed to obtain and, if necessary, configure the AccuVault network information (IP address, netmask, and gateway).

1 Connect Network and Power Cables

- Connect the two AccuVault ethernet network ports to ethernet network ports on a switch, hub, or router.

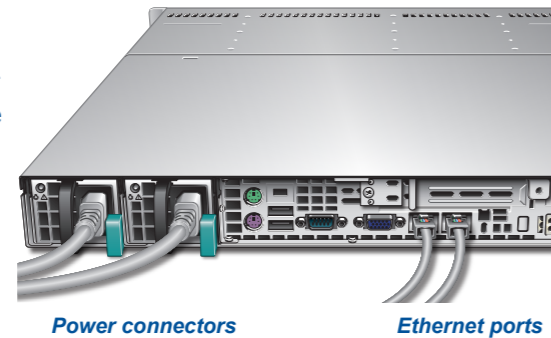
Note: Two network ports are recommended for efficient data throughput.

- Connect the two power cords that are appropriate for your region to the AccuVault.

Note: Two power cords are required for redundant power.

- Turn the power on by pushing the red power button that is located on the front of the AccuVault unit.

- Attach the appliance bezel to front of unit and use the supplied key to lock it in place, if desired.



2 Complete Windows Storage Server Tasks

Configure the following Windows Storage Server settings from the Tandberg Data AccuVault initial tasks window:

1. Set time zone.
2. Configure networking. The AccuVault system automatically assigns network information if your network uses DHCP. If your network does not use DHCP, you must assign the IP address, subnet mask, and gateway to the AccuVault system.

To manually configure network information:

- Click the Configure Network link in the initial tasks window. There are two Local Area Connections for each network connection to the AccuVault.

- Right-click on the first Local Area Connection and select Properties.

- Select Internet Protocol Version 4 in the dialog box and click the Properties button.

- Enter the IP address, subnet mask, and gateway. Also add the DNS server address. Click OK.

- Follow the same steps to manually configure the second Local Area Connection address.

3. Change the AccuVault computer name. You must change the computer name before creating any data protection plans. The plans use the computer name as a link when archiving data.

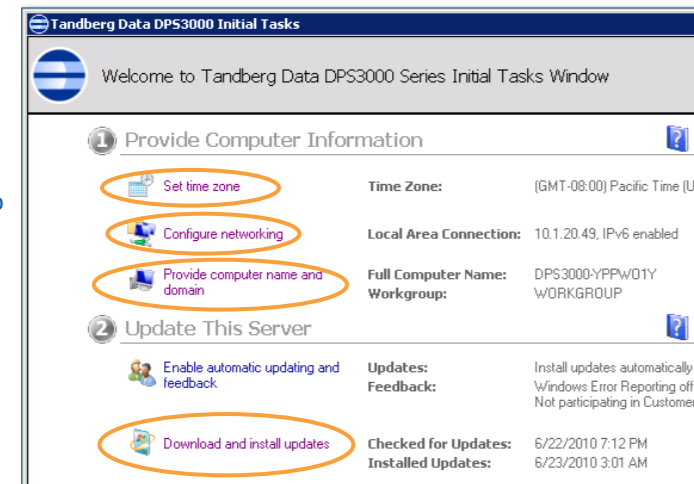
Note: Restart the computer after you change the computer name. Do not add the domain at the same time.

4. Add the AccuVault to the same network domain that the remote computer clients reside on. (Remote computer clients refers to the systems that you intend to back up with the AccuGuard software.)

5. Download and install any available critical Windows updates.

6. If necessary, set regional and language options from the Windows Control panel.

Note: All other links in the tasks window are there for your convenience. They are not required to run the AccuGuard software.



3 Connect via Remote Desktop

- From a Windows computer that is on the same network as the AccuVault, open Remote Desktop Connection. (For more information about Remote Desktop Connection, see the *AccuVault 1U-4TB/1U-8TB User Manual*.)

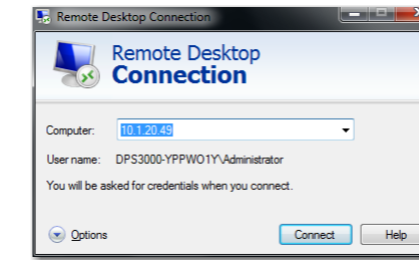
- In the Computer field, type one of the IP addresses for the AccuVault system. Use either IP address. Click Connect.

Note: If the AccuVault IP address was automatically assigned by the network, you can obtain it using the following method: Open the Command Prompt on the AccuVault system. Type `ipconfig`. Press Enter.

- Login with the default administrator password, **Admin!** Click OK.

Note: The administrator password is case sensitive.

The Tandberg Data AccuVault initial tasks window and the AccuGuard Navigator console are displayed.



4 Launch AccuGuard Enterprise Software

Complete the steps in the following three sections (obtain license keys, launch software, and activate license keys) to launch the AccuGuard Enterprise software.

Obtain license keys

- Follow the steps on your AccuGuard License Activation card to obtain your software license activation keys via email.

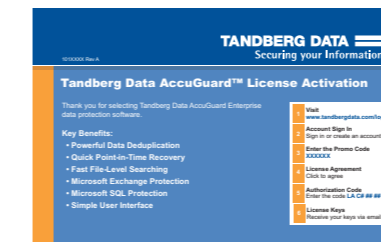
Note: There are two keys you must activate before you can use the AccuGuard software: the Enterprise key and the Enterprise Remote Computers key.

Launch software

- Click the "Start AccuGuard Data Protection Software" link located in the bottom-left corner of the AccuVault initial tasks window.

- If software updates are available, the Enterprise Upgrade wizard opens to update the software. Click Download to start the process.

Note: You can also verify you have the most current version of the software by clicking the "Check for Updates..." link in the right pane of the AccuGuard interface.



Activate license keys

- Add the Enterprise activation key that you received via email. There are four steps to complete this process:

1. Click Yes at the first dialog box that states, "Your license requires activation..."
2. Click Add from the License Keys dialog box.
3. Type the Enterprise license key. Click OK.
4. Click Yes to activate the software. The software activation dialog box opens.

- Select the Internet radio button to activate the software via the Internet. Click Activate. Click OK to confirm.

Note: If you do not have Internet access, select the Telephone radio button and contact Tandberg Data technical support for an activation PIN.

- Repeat steps 1 and 2 to activate the Enterprise Remote Computers license key.

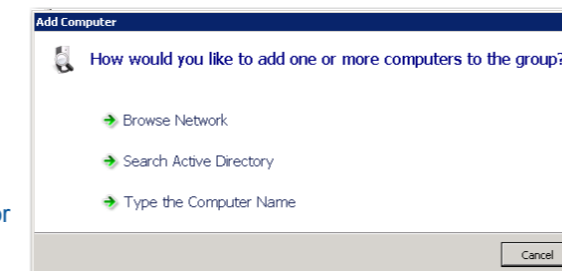
5 Add Remote Backup Clients

To add a remote computer that you intend to back up with the AccuGuard Enterprise software:

- Expand "Remote Computers" in the left pane of the AccuGuard Enterprise interface. Click "All Computers" from the left pane. Click "Add Computer..." from the right pane.

- Select one of the methods listed (browse network, search active directory, or type computer name) to add a computer.

- Click OK. Repeat the process to add more remote computer clients.



6 Create Data Protection Plans

To create a protection plan:

- Expand "Remote Computers" in the left pane of the AccuGuard Enterprise interface. Click on a remote computer name from the left pane. Click "Create a Protection Plan..." from the right pane.

- Select one of the following: Files and Folders, SQL Databases, or Exchange Data.

Note: The options to select SQL Databases or Exchange Data only apply if the remote computer has SQL or Exchange installed.

- Follow the Plan wizard to create a plan. There are six tasks:

1. Choose the data to protect (files and folders, databases, storage groups).

2. Select a store.

Note: AccuGuard Enterprise ships with a pre-configured store that you can select to get started. For more information on creating stores or advanced store management, see the *AccuVault 1U-4TB/1U-8TB User Manual*.

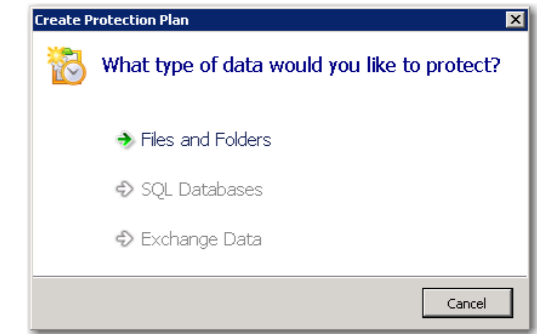
3. Select a temporary file location other than the default system C:\ drive location, if desired.

4. Type a plan name.

5. Set a backup schedule.

6. Finish.

- Type the requested administrator password for the remote computer. Click OK.



7 Create a Local Protection Plan (optional)

You can create a local data protection plan for the AccuVault's system C:\ drive. Creating a local plan for your system C:\ drive allows you to restore all of your system and AccuGuard Enterprise configuration settings if necessary. The process for creating a local plan is similar to creating a data protection plan for a remote computer.

To create a local plan:

- Click "Local Plans" from the left pane. Click "Create a Protection Plan..." from the right pane of the AccuGuard Enterprise interface.

- Select one of the following: Files and Folders, SQL Databases, or Exchange Data.

Note: The options to select SQL Databases or Exchange Data only apply if the remote computer has SQL or Exchange installed.

- Follow the Plan wizard to create a plan. Click Next after each task. There are six tasks:

1. Choose the data to protect (files and folders, databases, storage groups).

2. Select a store.

Note: AccuGuard Enterprise ships with a pre-configured store that you can select to get started. For more information on creating stores or advanced store management, see the *AccuVault 1U-4TB/1U-8TB User Manual*.

3. Select a temporary file location other than the default system C:\ drive location, if desired.

4. Type a plan name.

5. Set a backup schedule.

6. Finish.

- Type the requested administrator password for the AccuVault unit. Click OK.