

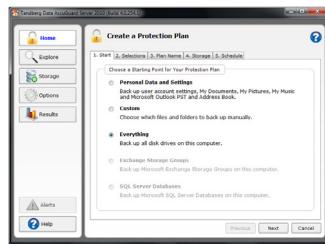
# 3 Install AccuGuard Server Software

**Note:** AccuGuard installs only on Windows operating systems.

- On a Windows host that will be backed up by the DPS2000 system, open a web browser and go to: <http://www.tandbergdata.com/login>.
- Follow the steps on your AccuGuard License Activation card to download the software.
- Run the AccuGuard Server.exe file.
- At the final screen of the setup wizard, be sure the checkbox “Run AccuGuard Server now” is selected. Click Finish.
- Select “Add a License Key.” Enter the license key that you received via email in the above download process.
- Click Yes to activate the software license, then click OK. The AccuGuard Home screen opens.



# 4 Create a Data Protection Plan



- From the Home screen, select “Add a Protection Plan” located in the upper-right area of the screen. The Create a Protection Plan interface opens.
- Complete the tasks in order, beginning with the Start tab and ending with the Schedule tab.

Refer to the following Protection Plan Tab Tasks section for more information.

## Protection Plan Tab Tasks

Tab	What to Do
Start	<p>Select one of the following protection plan options:</p> <ul style="list-style-type: none"> <li>• Personal Data and Settings — backs up data that is located in the Documents and Settings folder, such as email account and desktop settings.</li> <li>• Custom — backs up the files and folders that you manually select.</li> <li>• Everything — backs up all disk drives on the host computer (recommended).</li> <li>• Exchange Storage Groups — backs up Microsoft Exchange Storage Groups on the host computer (This option only applies if MS Exchange is installed on the host).</li> <li>• SQL Server Databases — backs up SQL Server databases on the host computer (This option only applies if SQL Server is installed on the host).</li> </ul>
Selections	<p>The Selections tab function varies depending on which plan option you initially selected.</p> <ul style="list-style-type: none"> <li>• Personal Data and Settings— select the user account settings to include in your protection plan.</li> <li>• Custom — select the drives, directories, and files to include in your protection plan.</li> <li>• Everything — the software automatically selects all disk drives on the computer for backup.</li> <li>• Exchange Storage Groups — select the storage groups to include in your protection plan.</li> <li>• SQL Server Databases — select one or more databases to include in your protection plan.</li> </ul>
Plan Name	Type a name and description for the protection plan.
Storage	Select the storage locations for the protection plan. If necessary, click Add to include a storage location. You can add storage located on a local, network, or removable disk drive.
Schedule	Choose a time and frequency for your protection plan. (The Advanced option allows you to schedule a backup run time under certain circumstances, such as when the system is idle.)

## For More Information

Visit the Support section of the Tandberg Data web site (<http://www.tandbergdata.com>) for more information, including product warranty and registration, knowledge base articles, user documentation, and technical support.

# TANDBERG DATA DPS2000™ with AccuGuard™

## Quick Start Guide

Desktop Version

## Check Accessory Kit Contents



Ethernet Cable  
(2 each)



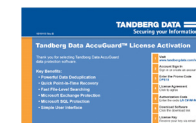
Power Cord (one for U.S. region  
and one for U.K. region)



Keys for Hard  
Disk Locks



DPS2000  
Utility CD



AccuGuard License  
Activation Card



Warranty Card

## DPS2000 System Features



- ❶ One-touch copy button
- ❷ USB 2.0 port
- ❸ LED indicators: Status, LAN, USB, HDD1, HDD2, HDD3, HDD4
- ❹ Power button
- ❺ Select button
- ❻ Enter button
- ❼ Power connector
- ❽ Gigabit Ethernet ports (2 each)
- ❾ USB 2.0 ports (4 each)
- ❿ e-SATA ports (2 each)
- ⓫ VGA (reserved for maintenance)
- ⓬ Password and network settings reset button
- ⓭ K-lock security slot

## Software System Requirements

### For AccuGuard Server software:

Operating System	Windows Server 2003 (32-bit, 64-bit), Windows 2008 (32-bit, 64-bit), Windows 2008 R2, Windows XP, Vista, and Windows 7
Processor	Minimum 2.0 GHz CPU
Memory	Minimum 2 GB RAM
Free Disk Space	80 MB

## 1

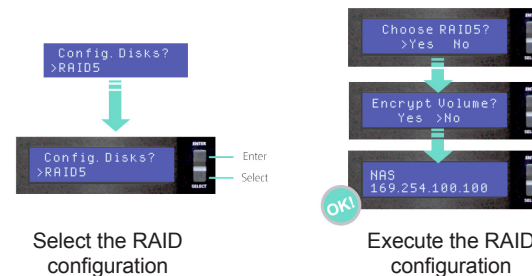
## Connect Network and Power Cables



- Connect one end of the ethernet cable to the NAS, and the other end to a network ethernet port (switch, hub, router, or host computer). If applicable to your network environment, connect the second ethernet cable to another network ethernet port.
- Connect the power cord that is appropriate for your region to the NAS, and plug it into a power outlet.
- Turn on the NAS.

## 2

## Configure the Hardware



### Via the LCD Panel

**Note:** Upon initial startup, the NAS LCD panel displays “Config Disks?”

To configure the NAS hardware via the LCD Panel:

- Press the Select button to scroll through the RAID configuration options.
- Press Enter when the correct RAID configuration is displayed in the LCD panel.
- Select Yes and press Enter to confirm the RAID configuration.
- Select Yes or No to encrypt the disk volume or not.

**Note:** You cannot remove an encrypted volume via the LCD panel. However, you can change the default encryption password via the web-based administration interface (see instructions top-right).

- If necessary, you can assign an IP address to the NAS via the LCD panel.

## Configure the Hardware (continued)

To access the administration interface:

- From a network host, type the NAS IP address and the port number (default is 8080) in a web browser:

`http://<NAS IP address>:8080/`

The NAS Hardware Home screen appears.

- To browse the administration interface, click the Administrator icon. Type the administrator name and password. The default for both the name and password is **admin**.
- Refer to the DPS2000 User Manual for information on how to use the web interface to perform administrative tasks.



Quick Configuration Setup Screen



NAS Hardware Administration Home Screen

### Via a Web Browser from a Connected Host

You can configure the NAS hardware via a web browser from any host on the same subnet as the NAS. The host can run on Windows, Macintosh, or Linux.

To configure the NAS hardware from a web browser:

- Obtain the NAS IP address from the DPS2000 LCD panel.
- From the network host, type the NAS IP address and the port number (default is 8080) in a web browser:

`http://<NAS IP address>:8080/`

- Login to the web interface. The default for both the administrator name and password is **admin**. The Quick Configuration setup screen appears.
- Complete the steps in order. Click Next to advance through the steps.

The NAS Hardware Home screen appears after you have successfully completed the configuration steps.

- To browse the administration interface, click the Administrator icon. Type the administrator name and password. The default for both the name and password is **admin**.
- Refer to the DPS2000 User Manual for information on how to use the interface to perform administrative tasks.