

Using RDX® QuikStor™ in Hyper-V™ Environments

Utilizing physical disk storage in a Hyper-V virtual machine is mostly realized with iSCSI disk subsystems which are connected to the network. Via iSCSI initiators, each VM can access its own portion of storage.

If a direct connected disk should be used, like a USB attached external disk or RDX QuikStor drive, a “Pass Through” method has to be deployed. A prerequisite for this is setting the disk offline at the host side to get access to this at the VM side. As setting offline is not available for removable devices, RDX QuikStor USB 3.0 drives provide a fixed disk mode to present themselves as regular disks to Windows operating systems.

The following guide explains how to utilize a RDX QuikStor drive directly from a virtual machine to perform a Windows Backup or other storage tasks to removable RDX media.

Attach a RDX QuikStor to a Hyper-V host

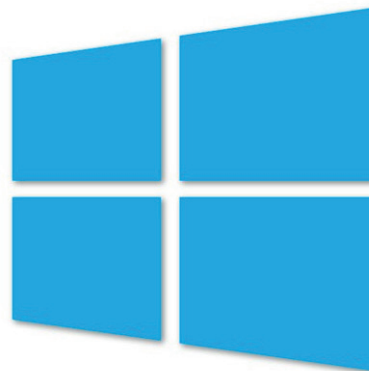
Connect your RDX USB 3.0 or RDX USB+ drive to the Hyper-V host. Check availability.

Change the RDX drive to fixed disk mode

At the host side, use the RDX utility software (version 1.55 and later) to configure RDX QuikStor in fixed disk mode. The software is available on the download section of the RDX QuikStor website. In addition, the latest firmware should be downloaded and installed to the RDX drive. (V2.05 or later).

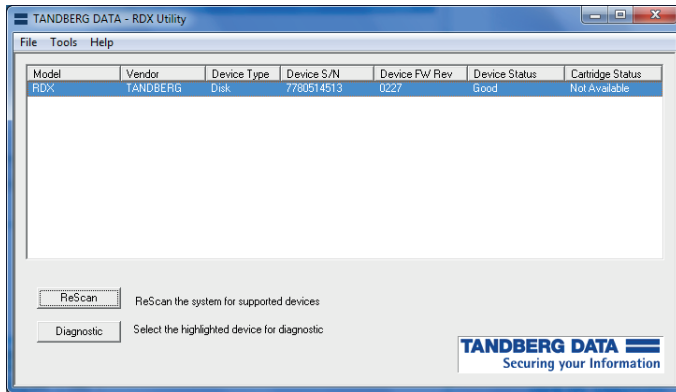


Windows Server
Hyper-V™

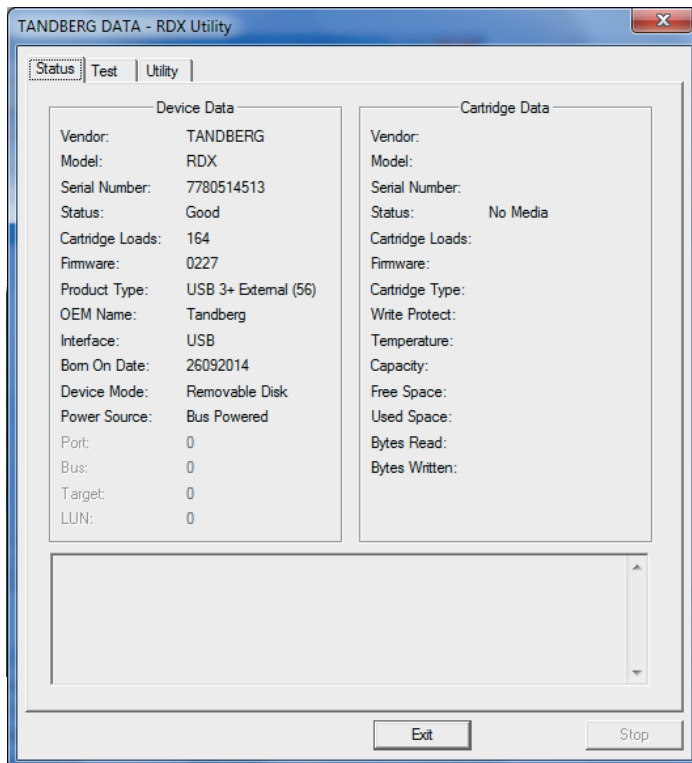


RDX QuikStor combines the Benefits of Disk and Tape

Using RDX® QuikStor™ in Hyper-V™ Environments

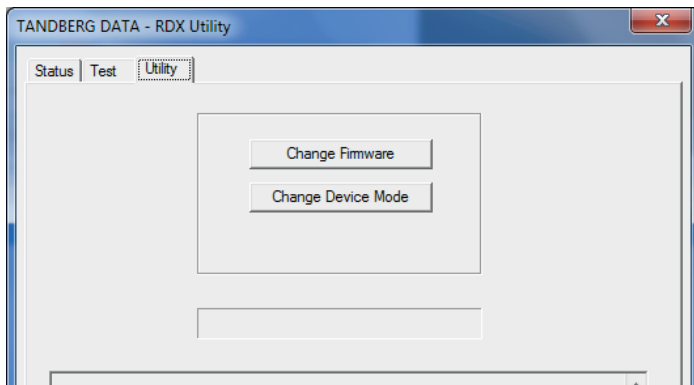


▶ Start the RDX Utility software



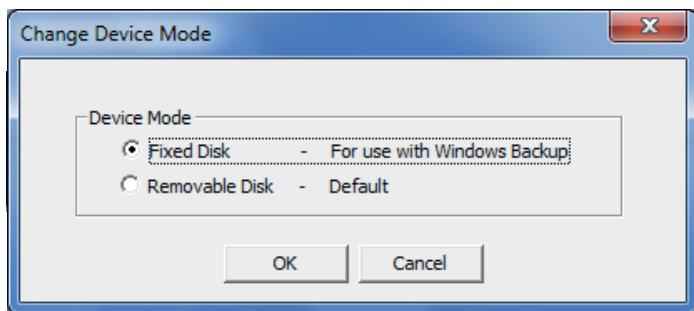
▶ Select the appropriate RDX drive and click on “Diagnostic”. If there is media inside the drive, eject it.

Using RDX® QuikStor™ in Hyper-V™ Environments

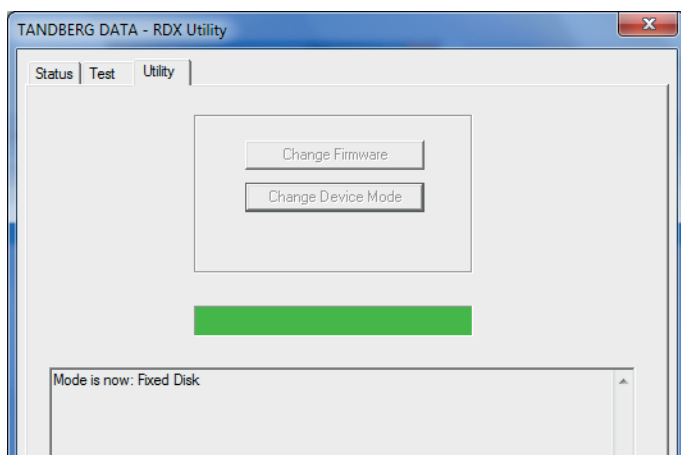


▶ The “Change Firmware” button can be used to update the firmware if necessary.

Click on “Change Device Mode”.



▶ Chose “Fixed Disk” and click “OK”.



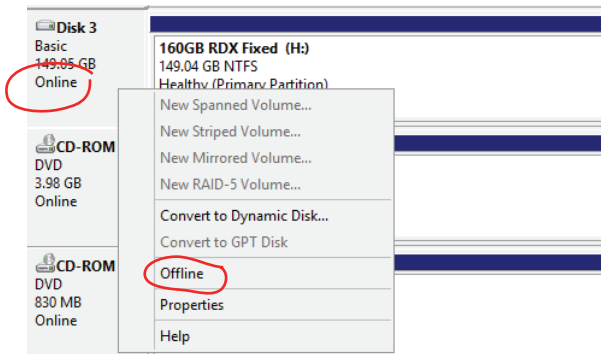
▶ Check the status message in the lower part of the window. Click “Exit” and close the RDX utility window.

The RDX QuikStor drive is now in Fixed Disk Mode.

Using RDX® QuikStor™ in Hyper-V™ Environments

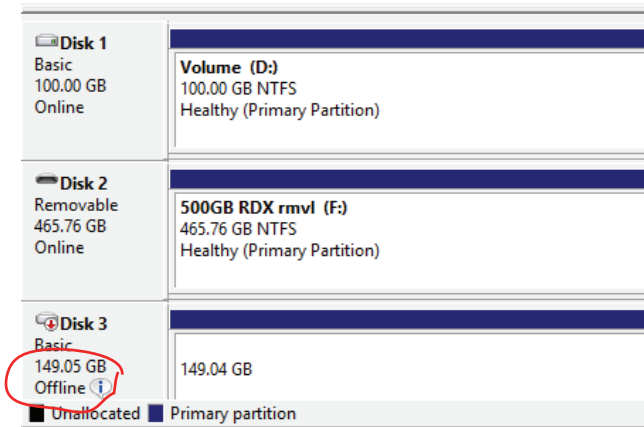
Set the RDX drive offline

Setting the RDX drive offline, removes it de facto from the host. At the same time, it becomes accessible for the virtual machines.



▶ Start the “Disk Management” utility at the Hyper-V host and right click on the corresponding RDX QuikStor drive.

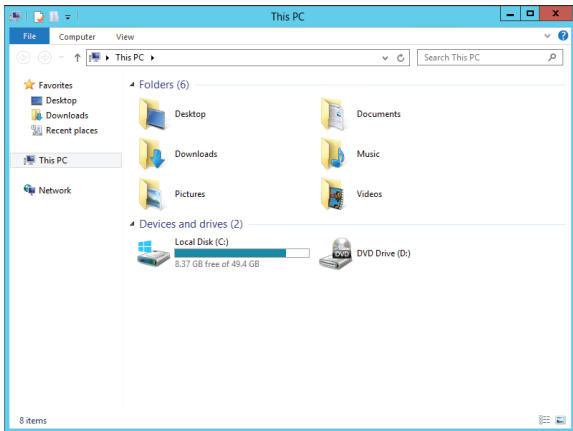
Click on “Offline”.



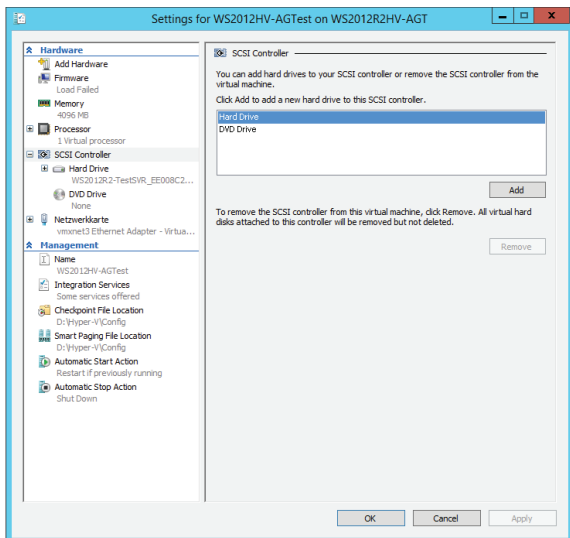
▶ The RDX drive is now offline and not accessible by the host any more.

Using RDX® QuikStor™ in Hyper-V™ Environments

Introduce RDX QuikStor to the Virtual Machine



▶ The explorer of the virtual machine currently doesn't show up a RDX QuikStor drive

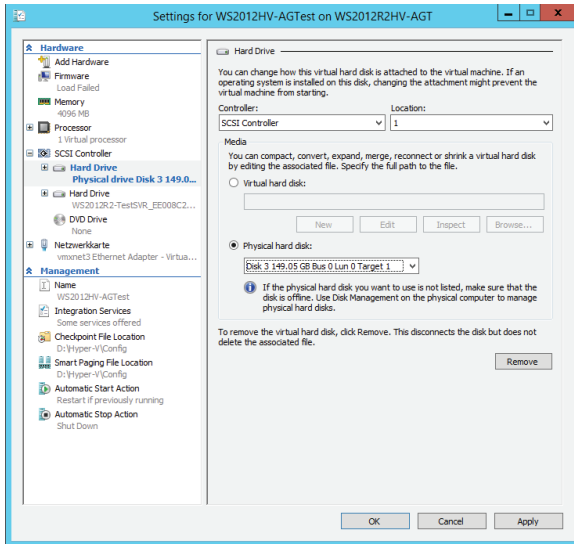


▶ Start the setup utility and go to:

Add Hardware - SCSI Controller
- Hard Drive

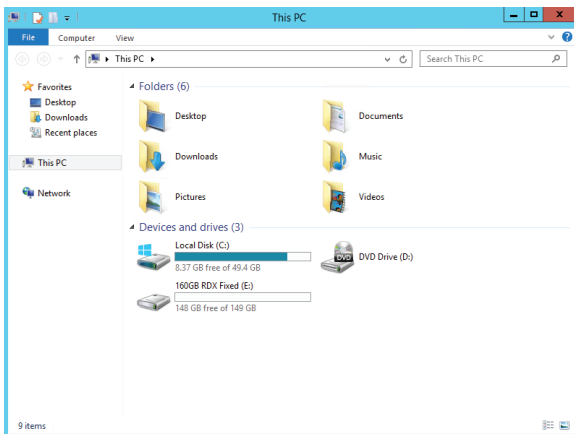
Click on "Add"

Using RDX® QuikStor™ in Hyper-V™ Environments



Select the right location. This should be a higher number as the system disk.

Choose “Physical hard disk”.



The RDX QuikStor drive is now visible in the explorer of the virtual machine and can be used for backup and archiving tasks.

Sales and support for Sphere 3D products and solutions are available in over 90 countries. Contact us today at sales@sphere3d.com.
For a full list of Sphere 3D addresses and phone numbers, please see our website at: <http://sphere3d.com/contact-us/>.