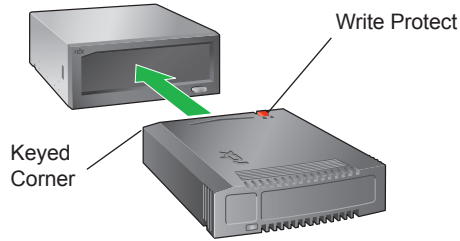


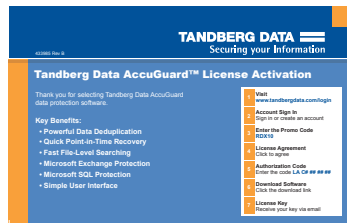
4 Load RDX Cartridge



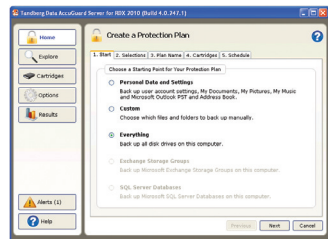
5 Install AccuGuard Server for RDX

Note: AccuGuard installs only on Windows operating systems.

- Follow the steps on your AccuGuard License Activation card to download the software.
- Run the AccuGuard Server for RDX.exe file.
- At the final screen of the setup wizard, be sure the checkbox “Run AccuGuard Server for RDX now” is selected. Click Finish.
- Select “Add a License Key.” Enter the license key that you received via email in the above download process.
- Click Yes to activate the software license, then click OK. The AccuGuard Home screen opens.



6 Create a Data Protection Plan



- From the Home screen, select “Add a Protection Plan” in the upper-right area of the screen. The Create a Protection Plan interface appears.
- Complete the tasks in order, beginning with the Start tab and ending with the Schedule tab.

Protection Plan Tab Tasks

| Tab | What to Do |
|------------|--|
| Start | Select one of the following protection plan options: <ul style="list-style-type: none"> • Personal Data and Settings — backs up data that is located in the Documents and Settings folder, such as email account and desktop settings. • Custom — backs up the files and folders that you manually select. • Everything — backs up all disk drives on the host computer (recommended). • Exchange Storage Groups — backs up Microsoft Exchange Storage Groups on the host computer. (This option only applies if MS Exchange is installed on the host.) • SQL Server Databases — backs up SQL Server databases on the host computer. (This option only applies if SQL Server is installed on the host.) |
| Selections | The Selections tab function varies depending on which plan option you initially selected. <ul style="list-style-type: none"> • Personal Data and Settings— select the user account settings to include in your protection plan. • Custom — select the drives, directories, and files to include in your protection plan. • Everything — the software automatically selects all disk drives on the computer for backup. • Exchange Storage Groups — select one or more the storage groups to include in your protection plan. • SQL Server Databases — select one or more databases to include in your protection plan. |
| Plan Name | Type a name and description for the backup plan. |
| Cartridges | Select the storage location(s) for the protection plan. If necessary, click Add to include a storage location. You can add storage located on a local, network, or removable disk drive. |
| Schedule | Choose a time and frequency for your protection plan. (The Advanced option allows you to schedule a backup run time under certain circumstances, such as when the system is idle.) |

For More Information

Visit the Support section of the Tandberg Data web site (<http://www.tandbergdata.com>) for more information, including product warranty and registration, knowledge base articles, user documentation, and technical support.

Refer to the following Protection Plan Tab Tasks section for more information.

TANDBERG DATA

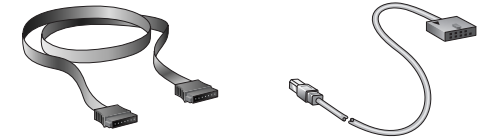
rdx® QUIKSTOR

with AccuGuard™

Quick Start Guide

Internal USB and Internal SATA

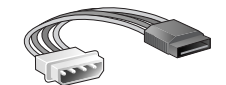
Check Accessory Kit Contents



One of the following:
SATA Data Cable or Internal USB Data Cable



Mounting Screws



Power Adapter Cable



RDX Utility CD

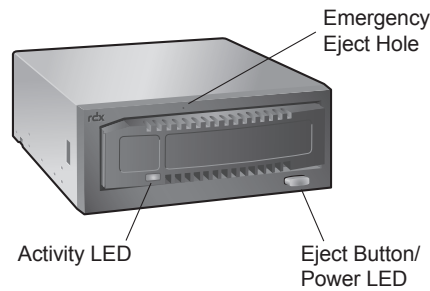


AccuGuard License Activation Card

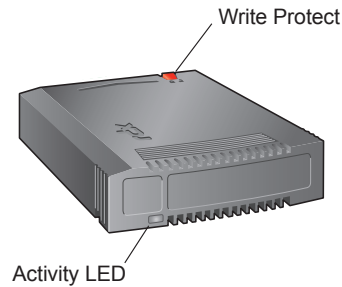


Warranty Card

RDX System Features



RDX Cartridge Features



Eject Button/Power LED

The following table describes the Power LED's function:

| LED Status | Meaning | Description |
|----------------|----------|--|
| Off | No Power | Unit does not have power. |
| On Green | Ready | Power is On and the unit is working properly. |
| Blinking Green | Ejecting | Unit is rejecting the cartridge. |
| On Amber | Fault | Unit has detected a fault condition. For more information, run a diagnostic application. |
| Blinking Amber | Prevent | Host computer is accessing the media and the user has pressed the Eject Button. The unit will eject the cartridge after the Host access completes. |

Activity LED

The following table describes the Activity LED's function:

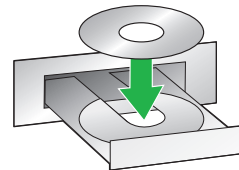
| LED Status | Meaning | Description |
|----------------|----------|--|
| On Green | Ready | Cartridge is ready. |
| Blinking Green | Activity | Reading, writing, seeking. |
| On Amber | Fault | Unit has detected a cartridge fault condition. For more information, run a diagnostic application. |

Software System Requirements

For AccuGuard Server for RDX software:

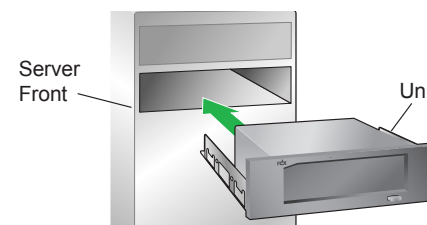
| | |
|------------------|--|
| Operating System | Windows Server 2003 (32-bit, 64-bit), Windows 2008 (32-bit, 64-bit), Windows 2008 R2, Windows XP, Vista, and Windows 7 |
| Processor | Minimum 2.0 GHz CPU |
| Memory | Minimum 2 GB RAM |
| Free Disk Space | 80 MB |

1 Install RDX Utility



Note: The RDX Utility installs only on Windows operating systems.

2 Mount the RDX Unit



- Power off the computer and open the server cover.
- Slide the unit in place and secure with the four mounting screws provided.

3 Connect Data and Power Cables



- Connect the data cables and power cables to the RDX dock. The dock connections are keyed to ensure the correct fit.
- For SATA interfaces, connect the SATA cable to your system's SATA controller (built-in or PCI card). For USB interfaces, connect the USB cable to the PC motherboard or to the USB host bus adapter. Align pin 1 on the cable connector with the pin 1 location on the motherboard. The pin 1 location on the cable connector is marked with a triangle ▲.

Warning: Connecting the USB Cable incorrectly to the PC will result in damage. Verify pin layout on the motherboard versus the cable connector pin-out (see diagram). Consult your motherboard manual for the pin 1 location on the mating USB connector.

- Replace the server cover and turn the computer on.

