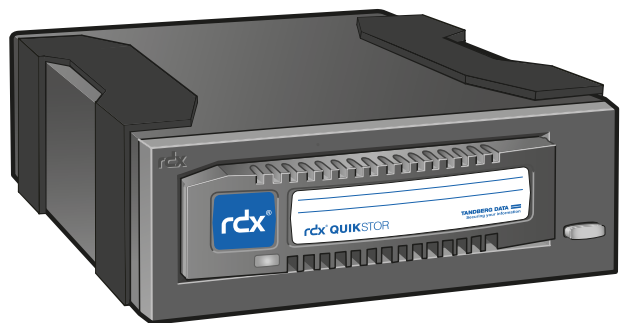




TANDBERG DATA

RDX® QuikStor™  
External USB3+

QUICK START

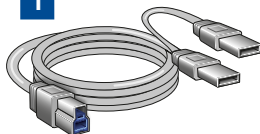


**For More Information**

Visit the support section of the Tandberg Data web site ([www.tandbergdata.com](http://www.tandbergdata.com)) for more information, including product warranty and registration, knowledge base articles, user documentation and technical support.

**WHAT'S IN THE BOX?**

1



2



3



4



5



1. USB Y-Cable
2. AccuGuard License Activation Card  
Note: AccuGuard software is only included with selected RDX products
3. Quick Start Guide
4. RDX Emergency Media Eject Pin
5. RDX Media  
Note: RDX Media is only included with selected RDX products

For RDX Warranty Registration and Technical Support Activation visit:  
<http://registration.tandbergdata.com/>

**Power Ratings**

The following power ratings represent typical-use performance  
**Note:** If insufficient power is experienced, use second USB-connector of the Y-cable or use an optional external power supply.

Power Source	DC Input Voltage and Rated Input Current
USB 3.0	
Ext. Power Supply	5-14VDC/2.4-0.9A

**FCC Compliance Notice**



**NOTE:** This equipment has been tested and found to comply with the limits for a Class B digital device, pursuant to part 15 of the FCC Rules. These limits are designed to provide reasonable protection against harmful interference in a residential installation. This equipment generates, uses and can radiate radio frequency energy and, if not installed and used in accordance with the instructions, may cause harmful interference to radio communications. However, there is no guarantee that interference will not occur in a particular installation. If this equipment does cause harmful interference to radio or television reception, which can be determined by turning the equipment off and on, the user is encouraged to try to correct the interference by one or more of the following measures:

- Reorient or relocate the receiving antenna.
- Increase the separation between the equipment and receiver.
- Connect the equipment into an outlet on a circuit different from that to which the receiver is connected.
- Consult the dealer or an experienced radio/ TV technician for help.

产品中有毒有害物质或元素的名称及含量

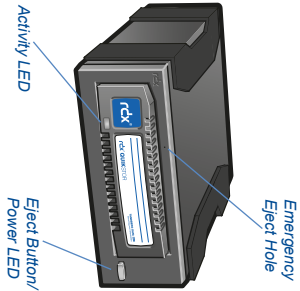
部件名称	有毒有害物质或元素					
	铅 (Pb)	汞 (Hg)	镉 (Cd)	六价铬 (Cr (VI))	多溴联苯 (PBB)	多溴二苯醚 (PBDE)
机箱/风扇	X	○	○	○	○	○
印刷电路板组件	X	○	○	○	○	○

○ : 表示该有害物质在该部件所有均质材料中的含量均在 SJ/T11363-2006 标准规定的限量要求以下。  
X : 表示该有害物质至少在该部件的某一均质材料中的含量超出 SJ/T11363-2006 标准规定的限量要求。



P/N 1021426 Rev. A

# START HERE



RDX QuikStor Features and LED Status

LED State		Media LED		Drive LED		Host
Color	Activity	Status	Description	Status	Description	Activity
	BLINKING RED	FAULT	RDX has detected a Media fault condition. For more information, run a diagnostic application.	FAULT	RDX has detected a Drive fault condition. For more information, run a diagnostic application.	ON
	STEADY GREEN	READY	Media is ready	READY	RDX is ready and working properly	ON
	STEADY AMBER	ACTIVITY	Reading, writing, seeking	EJECTING	Drive is ejecting Media	ON
	BLINKING AMBER	NOT READY	Media is not inserted properly or is powered down due to low powermode and host inactivity.	POWER DOWN	Drive does not have power through USB connection** or does not have power through external adapter.	ON
	STEADY GREEN	READY	Media is ready	READY	RDX is ready and working properly	ON
	STEADY GREEN	OFF		POWER SAVING*	Press and hold Eject Button to eject RDX Media	OFF
	STEADY GREEN	OFF		POWER SAVING*	Press and hold Eject Button for 5s to eject RDX Media	OFF
	BLINKING AMBER	N/A		PREVENT	Host computer is accessing the media and the user has pressed the Eject Button. The drive will eject the media after the Host access completes.	ON
	STEADY GREEN	N/A		POWER SAVING*	Press and hold Eject Button for 5s to eject RDX Media	OFF
	STEADY GREEN	N/A		POWER SAVING*	Press and hold Eject Button for 5s to eject RDX Media	OFF

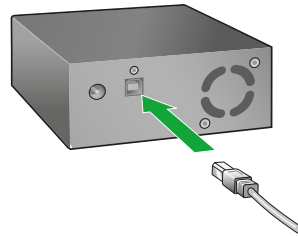
\*Note: Only applicable for USB3+ RDX drives with external adaptor power or USB port with charging function  
 \*\*Note: Only applicable for USB3+ RDX drives

## 1 Install RDX Utility

**Note:** The RDX Utility installs only on Windows.

- Go to [www.Tandbergdata.com](http://www.Tandbergdata.com).
- Choose "Support" from the main menu.
- Click on "Drivers and Downloads" at the right hand side of the page.
- Click the "Go"-Button near RDX QuikStor.
- Choose "RDX\_UTILITY.zip".
- Click on "Download RDX Utility".
- Register and download the RDX Utility.
- Unpack the zip-file, start "setup.exe" and follow the installation instructions.

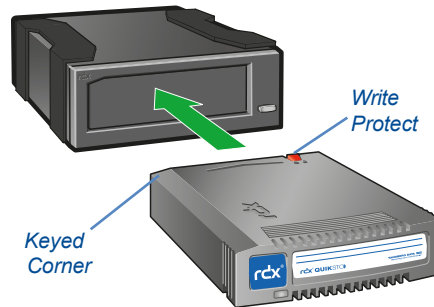
## 2 Connect Data Cable



- Connect the USB cable to the RDX drive and to the host computer
- Download and install the latest firmware

**Note:** USB3.0 is the recommended interface connection for the USB3+ drive. Some systems may not deliver enough power from a single USB port. For additional power, plug in both USB connectors of the supplied USB cable into the host computer. In some instances (USB2.0) your system may not deliver enough power even with dual USB host connection. In this case we recommend to use an external power adapter.

## 3 Load RDX Cartridge



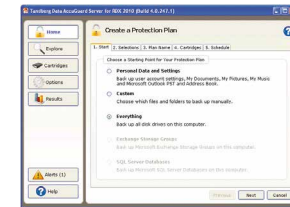
## 4 Install AccuGuard Server for RDX

Tandberg Data AccuGuard backup and recovery software is only included with selected RDX products. If your product includes an AccuGuard licence activation card, follow the instructions on the card to download and install the software.

**Note:** AccuGuard installs only on Windows operating systems.

- Follow the steps on your AccuGuard License Activation card to download the software.
- Run the AccuGuard Server for RDX.exe file.
- At the final screen of the setup wizard, be sure the checkbox "Run AccuGuard Server for RDX now" is selected. Click **Finish**.
- Click "Add a License Key." Enter the license key that you received via email in the above download process.
- Click **Yes** to activate the software license, then click **OK**. The AccuGuard Home screen opens.

## 5 Create a Data Protection Plan



- From the Home screen, select "Add a Protection Plan" in the upper-right area of the screen. The Create a Protection Plan interface opens.
- Complete the tasks in order, beginning with the Start tab and ending with the Schedule tab.

Refer to the *AccuGuard Server for RDX User Guide* (available at [www.tandbergdata.com](http://www.tandbergdata.com)) for detailed information about Protection Plan tab tasks.