

# TANDBERG DATA

Securing your Information

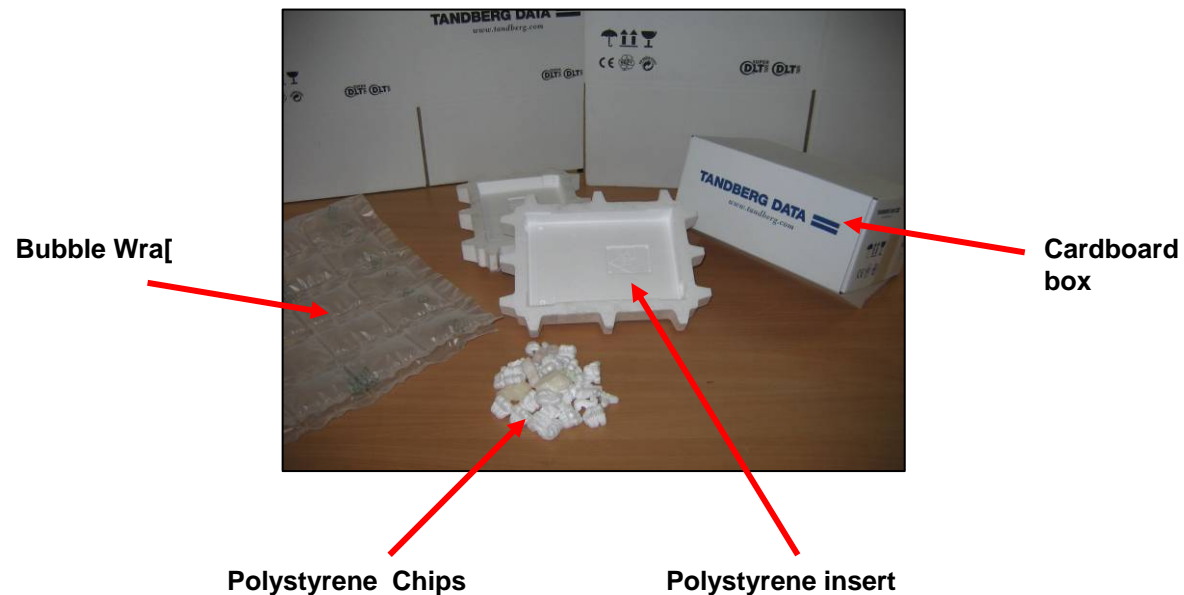
## Tandberg Data Packing instructions

December, 2010



[logisticemea@tandbergdata.com](mailto:logisticemea@tandbergdata.com)

## Protect your goods against damage in transit – packing instructions



# Protect your goods against damage in transit

Submission of "Bring In"  
(Equipment covered under  
the Tandberg Data guarantee  
to be returned)

Returning items under ARS  
(Equipment for exchange)

If you use this option to send your device in for repair by us, please note that Tandberg Data GmbH does not accept liability for goods or unsatisfactorily packaged goods that are damaged in transit.

Please use the **original Tandberg packaging**. Should the original packaging not be available, then please:

- ✓ **Package your unit in an anti-static bag.**
- ✓ **Protect the appliance with polystyrene chips**
- ✓ **Pack the unit in a sturdy box or carton**
- ✓ **Mark the outside of the box with the words "FRAGILE" or "HANDLE WITH CARE"**

Your freight forwarder or carrier, and Tandberg Data will not be held liable for any damages caused in transit due to poor packaging. (HGB, CMR, ADSP, GüKG)

Please contact our logistics department if you have any packaging questions.  
e-mail: [logisticemea@tandbergdata.com](mailto:logisticemea@tandbergdata.com)

# This is how it is done ....

1. Place the polystyrene inserts in the base of the packing carton



2. Swt the T40 vertically into the polystyrene insert



3. Place the other polystyrene insert on the top place the T40 flat on the cardboard



4. Put in place the 4 sides of the packaging carton



5. Add the carton lid and seal the pack



6. Place the unit on a pallet



7. Wrap the box and the pallet with stretch film



8. Make sure the box can not slide on the pallet



To avoid damage in transit please adhere to the following packing instructions for all automation, disk based systems and tape drives.

**Automation products should not be shipped by UPS. A shipping haulier capable of shipping palletised products must be used.**

**TANDBERG DATA** 